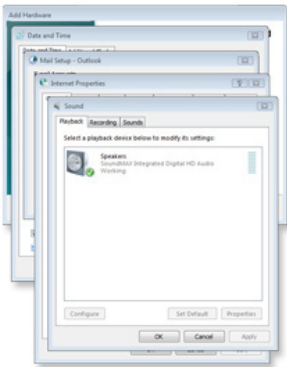


DATA-LOAD**What Is Dataloading?**

Get the most out of your branded USB drives by having us pre-load data on the USB's. By data-loading you can use the USB drives as a way to distribute information such as presentations, PDF's, photos, videos, catalogs and any other file type. Dataloading content reduces printed materials which is good for the environment and the bottom line!

What can be put on the drive?

Any files that a computer can read can be loaded onto the USB drives. You can have a link to your website; a 30-second video spot for your company; a PowerPoint presentation; a PDF of your full catalog; or even a special computer program. The possibilities are endless!

Is it compatible with Macintosh and Windows computers?

Yes, basic dataloading is a usable option for both Mac and Windows computers as long as the files you put on the drive work on both operating systems.

What other options are available?

- **Website Auto-Run**

You provide us with a website address and we'll have the USB's link directly to the URL provided. When the USB is plugged in it will take the user directly to your specified webpage. This is a perfect way to drive customers to your website.

- **Auto-run**

Auto-run allows you to choose one file on your USB flash drive that you want to load every time the USB drive is plugged into the computer. Please note that auto-runs will not work on Macs and some PCs with very high security settings. Auto-runs are deletable..

- **Data-locking (Non-erasable content)**

Data-locking will store your data permanently on the drive, ensuring that it is not erased. Data locking requires the drives to be partitioned into two parts. One part can be used like a normal flash drive: files can be loaded, opened and deleted as usual. The second part shows up on the computer as a CD-Rom drive and contains the locked data which cannot be deleted or edited. Mac users cannot see the locked part of the drive.

- **Password-locking the drive**

We can also password lock the entire USB drive without any pre-loaded data. This way, the user can set their own password when they first receive the drive and secure their own data with a password of their choosing. (Please note, password lock will not work on MAC computers)